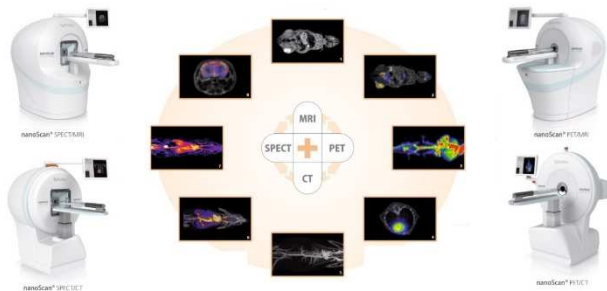


nanoScan® Family

Common Versatile Platform



September 18-21, 2013
Savannah, GA, USA

THURSDAY

In Vivo Imaging of Microglia Cells Activated by LPS-Induced Systemic Inflammation in Mouse

Domokos Mathe¹, Ildiko Futo², Daniel Veres², Ildiko Horvath², Mariann Semjen¹, Noemi Kovacs¹, Miklós Tóth³, Ralf K. Bergmann⁴, Krisztian Szigeti¹

1. CROmed Ltd, Budapest, Hungary. 2. Biophysics and Radiation Biology, Semmelweis University, Budapest, Hungary. 3. Clinical Neuroscience, Karolinska Institute, Stockholm, Sweden. 4. Radiopharmacy Radiopharmaceutical Biology, Helmholtz-Zentrum, Dresden-Rossendorf, Germany.

P218. Thursday, Sept 19, 15:15-16:45

Poster Session 2 (**Exhibit Hall B**)

nanoScan PET/MRI; Silver Upgrade of NanoSPECT/CT

⁸⁹Zr-Oxine Complex: a Long-Lived Radiolabel for Cell Tracking Using PET

Levente K. Meszaros¹, Putthiporn Charoenphun¹, Krisanat Chuamsaamarkkee¹, James R. Ballinger^{1,2}, Greg Mullen¹, Trevor J. Ferris³, Michael J. Went², Phil Blower¹

1. Department of Imaging Chemistry and Biology, King's College London, London, United Kingdom. 2. Department of Nuclear Medicine, Guy's and St Thomas NHS Foundation Trust, London, United Kingdom. 3. School of Physical Sciences, University of Kent, Canterbury, Canterbury, United Kingdom.

LB024. Thursday, Sept 19, 15:15-16:45

Late Br.Abst.Poster S (**Exhibit Hall B**)

nanoScan PET/CT

PSMA Specific Diabody For SPECT Imaging of Prostate Cancer

Florian Kampmeier¹, Jennifer D. Williams¹, John Maher^{2,3,4}, Greg Mullen¹, Phil Blower¹

1. School of Medicine, Division of Imaging Sciences & Biomedical Engineering, King's College London, London, London, United Kingdom. 2. King's Health Partners Integrated Cancer Center, Department of Research Oncology, King's College London, London, London, United Kingdom. 3. Department of Immunology, Barnet and Chase Farm NHS Trust, London, London, United Kingdom. 4. Department of Clinical Immunology and Allergy, King's College Hospital NHS Foundation Trust, London, London, United Kingdom.

LBAP105. Thursday, Sept 19, 15:15-16:45

Late Br.Abst.Poster S (**Exhibit Hall B**)

nanoScan PET/CT; Silver Upgrade of NanoSPECT/CT

Spatio-Temporal Quantification of Sodium Iodide Symporter (NIS) Radiotracers using pre-clinical SPECT/CT and PET/CT: A Study in Healthy Scid/Beige Mouse

Krisanat Chuamsaamarkkee¹, Seckou Diocou¹, Greg Mullen¹, Lefteris Livieratos^{1,2}, Phil Blower¹

1. Imaging Sciences and Biomedical Engineering, King's College London, London, United Kingdom. 2. Nuclear Medicine, Guy's & St Thomas' Hospitals NHS Foundation Trust, London, United Kingdom.

LBAP106. Thursday, Sept 19, 15:15-16:45

Late Br.Abst.Poster S (**Exhibit Hall B**)

Silver Upgrade of NanoSPECT/CT

FRIDAY

Study of Acetyl-L-Carnitine Effects on Glucose Metabolism in Mouse Brain Using PET/MRI Imaging

Lidia S. Cunha^{3,4}, Domokos Mathe¹, Ildiko Horvath², Daniel Veres², Krisztina Szigeti², Luis F. Metello³, Teresa Summavieille⁴

1. CROmed Ltd, Budapest, Hungary. 2. Biophysics and Radiation Biology, Semmelweis University, Budapest, Hungary. 3. Nuclear Medicine Department, High Institute for Allied Health Technologies of Porto - Polytechnic Institute of Porto, Porto, Portugal. 4. Neuroprotection Lab, IBMC, University of Porto, Porto, Portugal.

P341. Friday, Sept 20, 15:15-16:45

Poster Session 3 (**Exhibit Hall B**)

nanoScan PET/MRI

In vivo basic tracer pharmacokinetic analysis for transgenic mouse models of Alzheimer's disease

Kriszti á n Szigeti¹, Gell é rt- Szabolcs Kov á cs¹, Istv á n Vars á nyi¹, Ferenc Bud á r², Ildiko Horvath¹, Albert D. Windhorst³, Domokos Mathe²

1. Biophysics and Radiation Biology, Semmelweis University, Budapest, Hungary. 2. CROmed Ltd, Budapest, Hungary. 3. Radiology, Nuclear Medicine and PET Research, Vrije University, Amsterdam, Netherlands.

P349. Friday, Sept 20, 15:15-16:45

Poster Session 3 (**Exhibit Hall B**)

nanoScan PET/MRI; Silver Upgrade of NanoSPECT/CT

SATURDAY

Dual modality optical and radionuclide reporter gene imaging of heterogeneous chemotherapy response in different microenvironments

Gilbert O. Fruhwirth^{1, 3}, Seckou Diocou¹, Phil Blower^{1, 3}, Tony Ng^{2, 3}, Greg Muller¹

1. Department for Imaging Chemistry and Biology, King's College London, London, United Kingdom; 2. Dimpleby Department of Cancer Research, King's College London, London, United Kingdom; 3. Comprehensive Cancer Imaging Centre KCL & UCL, King's College London, London, United Kingdom.

SS119. Saturday, Sept 21, 11:30-11:45

Scientific 20 (**105**)

Silver Upgrade of NanoSPECT/CT

PEGylated Core/shell Doped Fe₃O₄@NaYF₄ Nanoparticles: Multimodality Molecular Imaging Contrast for MRI, PET/SPECT and Optical Imaging

Xianjin Cui¹, Phil Blower^{1,2}, Mark Green^{1,3}

1. Imaging Science, King's College London, London, United Kingdom. 2. Chemistry, Kings College London, London, United Kingdom. 3. Physics, Kings College London, London, United Kingdom.

P450. Saturday, Sept 21, 14:45-16:15

Poster Session 4 (**Exhibit Hall B**)

nanoScan PET/CT

Lessons learnt from reporter gene imaging of regulatory T cell therapy in transplantation: a non-invasive whole body nuclear imaging study.

Ehsan Sharif-Paghaleh^{1,2}, John Leech¹, Robert Lechler¹, Lesley A. Smyth¹, Giovanna Lombardi¹, Greg Muller^{1,2}

1. MRC Centre for Transplantation, KCL, London, United Kingdom. 2. Imaging Sciences, KCL, London, United Kingdom.

P525. Saturday, Sept 21, 14:45-16:15

Poster Session 4 (**Exhibit Hall B**)

Silver Upgrade of NanoSPECT/CT

PET/MRI/SPECT/CT in vivo longitudinal imaging of Earthworm (*Lumbricus terrestris* L.), as a novel means of environmental monitoring

Ferenc Bud á r², Noemi Kovacs², Ildiko Horvath¹, Daniel Veres¹, P é ter Engelmann³, Peter Nemeth³, Kriszti á n Szigeti¹, Domokos Mathe²

1. Biophysics and Radiation Biology, Semmelweis University, Budapest, Hungary. 2. CROmed Ltd, Budapest, Hungary. 3. Department of Immunology and Biotechnology, University of Pécs, Pécs, Hungary.

P535. Saturday, Sept 21, 14:45-16:15

Poster Session 4 (**Exhibit Hall B**)

nanoScan PET/MRI; Silver Upgrade of NanoSPECT/CT

Minimum Detectable Activity of a Preclinical PET/MR System

Kalman L. Nagy^{1,2}, Judit Lantos¹, P é ter Major¹, Gergely Patay¹, Christer Halldir², Bal á zs Guly á s²

1. Mediso Ltd, Budapest, Hungary. 2. Dept. Clinical Neuroscience, Karolinska Institutet, Stockholm, Sweden.

P603. Saturday, Sept 21, 14:45-16:15

Poster Session 4 (**Exhibit Hall B**)

nanoScan PET/MRI

Email us at info@medisousa.com

for copies of all of these posters (after they have been presented)